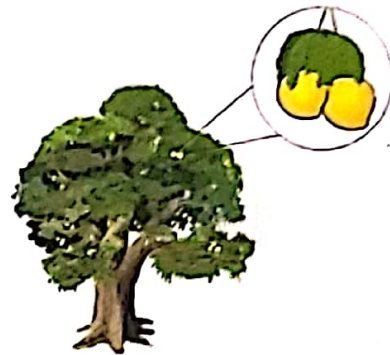


PICTURE STUDY **TP**

1. Pictures of certain plants are shown below, along with their jumbled up names. Identify the plants and unjumble the labels.



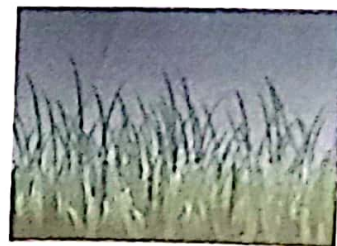
nepi reet



ngmao reet



utlos tlanp



apte sasgr

2. A picture of a plant is shown alongside. Identify it, and answer the following questions.

a. Name the plant.

.....
.....

b. Where does it grow?

.....
.....





c. Write an important feature of its habitat.

.....

d. Does it possess leaves? If not, why?

.....

.....

e. Which special structure is present on this plant?

.....